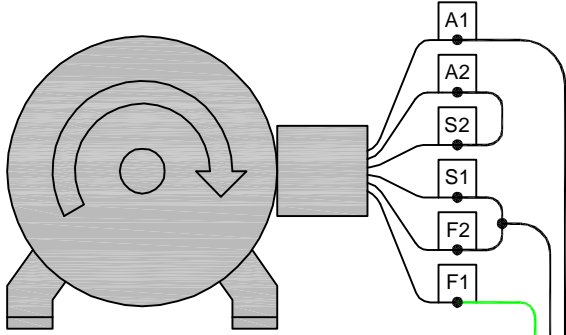


DC GENERATOR

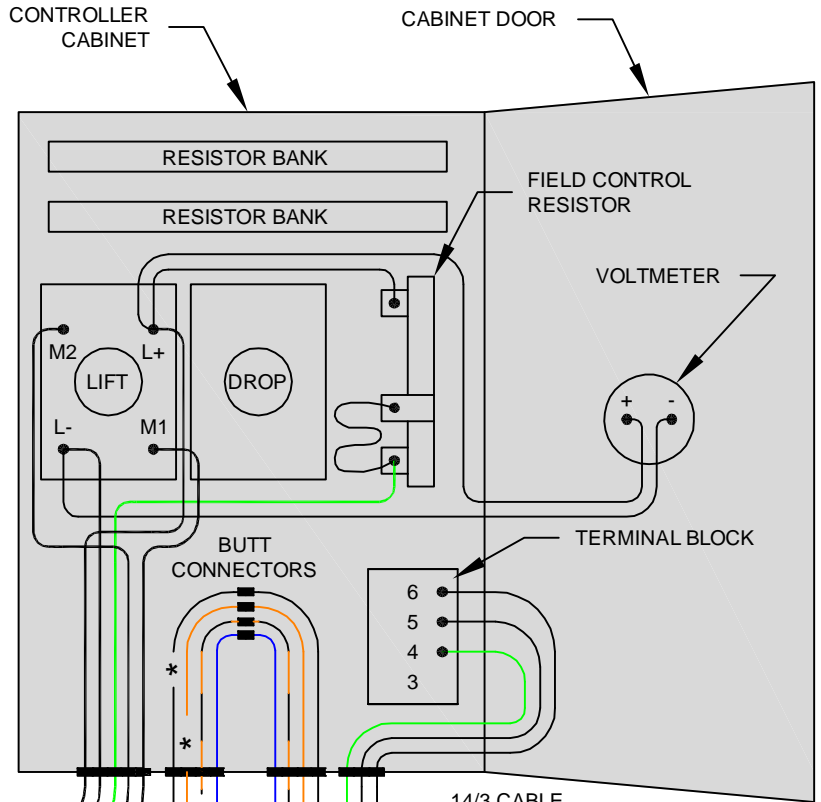


SHOWN FOR CLOCKWISE ROTATION
(FACING SHAFT)
FOR COUNTERCLOCKWISE ROTATION
INTERCHANGE LEADS A1 AND A2

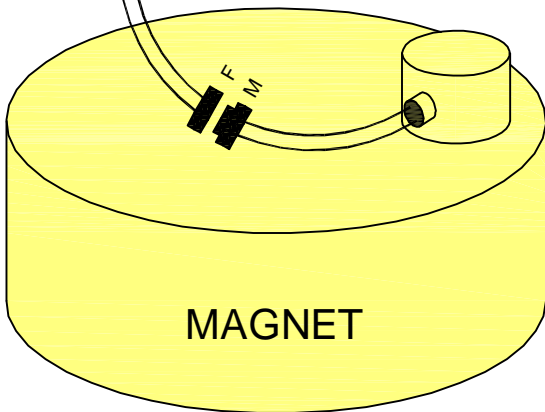
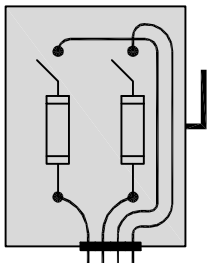
WIRING DIAGRAM

SIEB 5KW & 10KW MAGNET SYSTEMS
4295 AUTOMATIC DROP CONTROLLER
SIZE 1 OR 2, 12v OR 24v for REMOTE SWITCH RELAY

CONTROLLER



SAFETY DISCONNECT



MAGNET

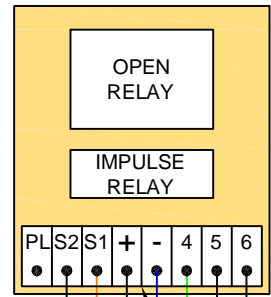
10/3 CABLE (5KW)
8/3 CABLE (10KW)

8/2 CABLE

8/2 CABLE

PALTRONICS BOX {
TRUCK HARNESS 'F'
CHASSIS GRD

*** NOTE:** WIRE COLOR CODING FROM THE TRUCK TO THE EXISTING SWITCH RELAY IN THE CONTROLLER CABINET MAY VARY FROM UNIT TO UNIT. THEREFORE, MARK THE EXISTING WIRES WITH THE TERMINAL STRIP DESIGNATION PRIOR TO REMOVING THEM.



REMOTE SWITCH RELAY BOX

NOTES:

1. SAFETY FIRST! DISCONNECT ALL POWER SOURCES WHEN WIRING THE EQUIPMENT.
2. CUSTOMER SUPPLIED POWER SOURCE. USE KEYED POWER. DO NOT TAKE DIRECTLY FROM BATTERY. THE CONTROLLER M/L NUMBER INDICATES IF THE CONTROLLER IS 12 VOLT OR 24 VOLT. NEVER SUPPLY 24 VOLT POWER TO A 12 VOLT CONTROLLER!